

**Kite**

Metal Seating Collection

When ordering this product, specification codes must be added to unit Model Number, as shown below.

NOTE: Upholstery and/or additional options must be specified separately.

Kite



METAL FRAME  
FINISH -

MODEL  
NUMBER -

METAL FRAME  
FINISH -

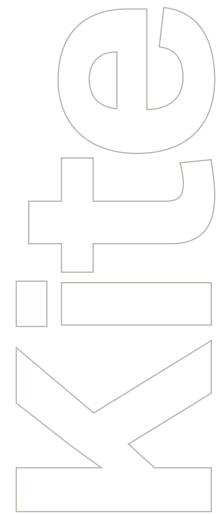
# KT400 -SS

- GM** Gunmetal
- MB** Metallic Beige
- SB** Smooth Black
- SS** Smooth Silver
- TB** Textured Black
- TN** Textured Nickel

## Kite

### Metal Seating Collection

Different fabrics may be specified on the seat and on the back. In this case, use the higher grade of the two. No additional upcharge applies. All prices are in CA dollars (CAD).



## KT400

### DESCRIPTION –

Metal Folding Chair

16" seat width



### DIMENSIONS –

Width 19

Depth 22

Height 34

Seat Width 16

Seat Depth 16.5

Seat Height 18

COM Yard Back 0.5

COM Yard Seat 0.5

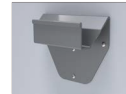
Cubic Feet 8

Ship Weight 19

### OPTIONS –

Moisture barrier +35

Wall mount bracket (KICWB) +145



WALL MOUNT BRACKET  
W 7.5 D 2.5 H 6

MODEL NO.	COM/1	2	3	4	5	6	7	8
KT400	857	905	955	1003	1052	1100	1148	1198

## KT500

### DESCRIPTION –

Metal Folding Chair

18" seat width



### DIMENSIONS –

Width 21

Depth 22

Height 34

Seat Width 18

Seat Depth 16.5

Seat Height 18

COM Yard Back 0.5

COM Yard Seat 0.5

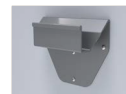
Cubic Feet 9

Ship Weight 20

### OPTIONS –

Moisture barrier +35

Wall mount bracket (KICWB) +145



WALL MOUNT BRACKET  
W 7.5 D 2.5 H 6

MODEL NO.	COM/1	2	3	4	5	6	7	8
KT500	967	1023	1079	1135	1191	1245	1304	1360